

BDV SERIES

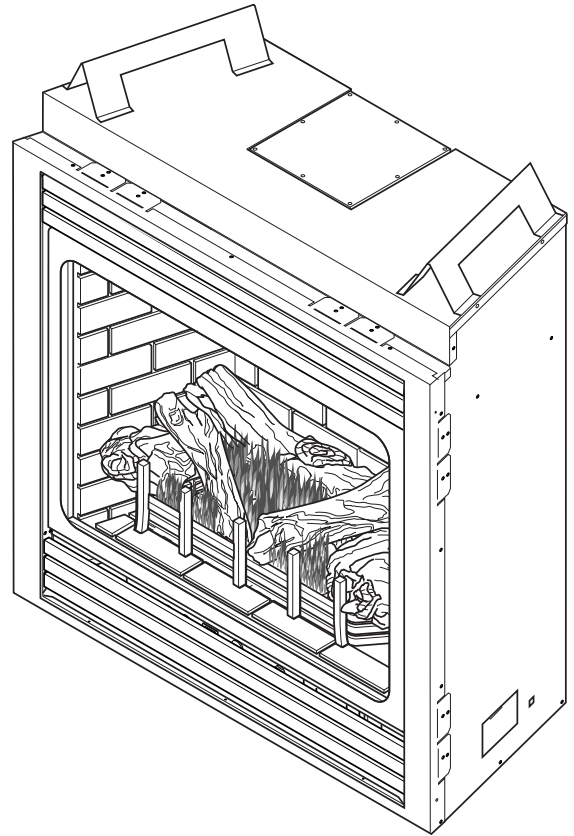
DIRECT VENT GAS FIREPLACE

INSTALLATION AND OPERATING INSTRUCTIONS



MODELS:

**BDV300, BDV400,
BDV500, BDV600**



WARNINGS

IF THE INFORMATION IN THESE INSTRUCTIONS ARE NOT FOLLOWED EXACTLY, A FIRE OR EXPLOSION MAY RESULT CAUSING PROPERTY DAMAGE, PERSONAL INJURY OR LOSS OF LIFE.

- Do not store or use gasoline or other flammable vapors and liquids in the vicinity of this or any other appliance.
- **WHAT TO DO IF YOU SMELL GAS**
 - Do not try to light any appliance.
 - Do not touch any electrical switch; do not use any phone in your building.
 - Immediately call your gas supplier from a neighbor's phone. Follow the gas supplier's instructions.
 - If you cannot reach your gas supplier, call the fire department.
- Installation and service must be performed by a qualified installer, service agency or the gas supplier.

WARNING: Improper installation, adjustment, alteration, services or maintenance can cause injury or property damage. Refer to this manual. For assistance or additional information consult a qualified installer, service agency or the gas supplier.

This appliance is only for use with the type of gas indicated on the rating plate. This appliance is not convertible for use with other gases, unless a certified kit is used.

This appliance may be installed in an aftermarket*, permanently located, manufactured home, where not prohibited by local codes.

*Aftermarket: Completion of sale, not for purpose of resale, from the manufacturer.

DUE TO HIGH TEMPERATURES, THE APPLIANCE SHOULD BE LOCATED OUT OF TRAFFIC AND AWAY FROM FURNITURE AND DRAPERIES.

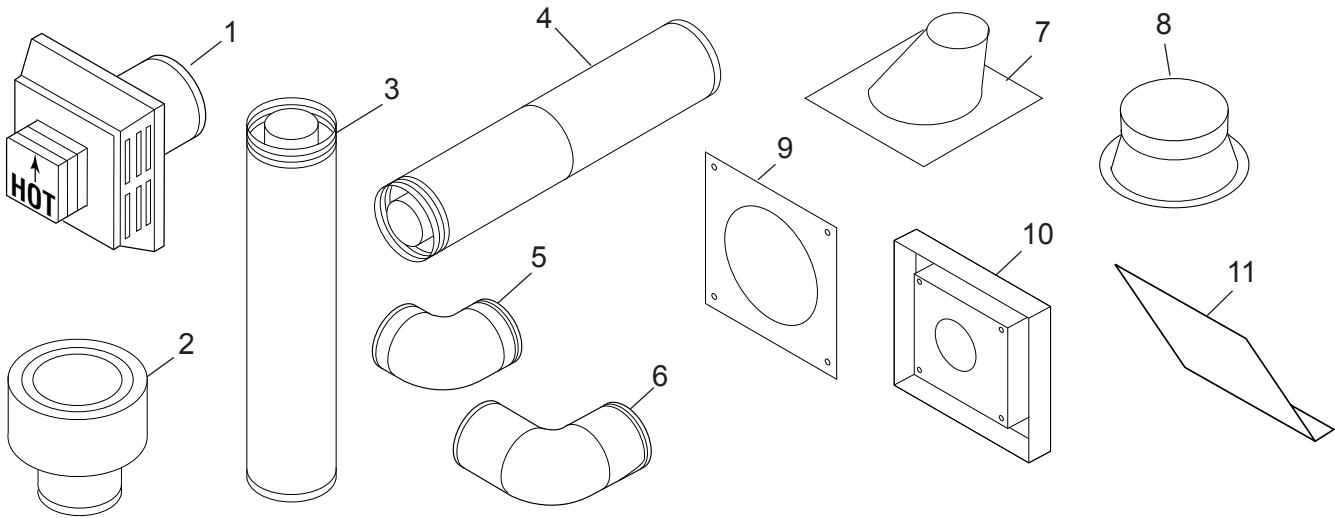
CHILDREN AND ADULTS SHOULD BE ALERTED TO THE HAZARDS OF HIGH SURFACE TEMPERATURE AND SHOULD STAY AWAY TO AVOID BURNS OR CLOTHING IGNITION.

YOUNG CHILDREN SHOULD BE SUPERVISED WHEN THEY ARE IN THE SAME ROOM AS THE APPLIANCE.

CLOTHING OR OTHER FLAMMABLE MATERIAL SHOULD NOT BE PLACED ON OR NEAR THE APPLIANCE.

KEEP THE ROOM AREA CLEAR AND FREE FROM COMBUSTIBLE MATERIALS, GASOLINE, AND OTHER FLAMMABLE VAPORS AND LIQUIDS.

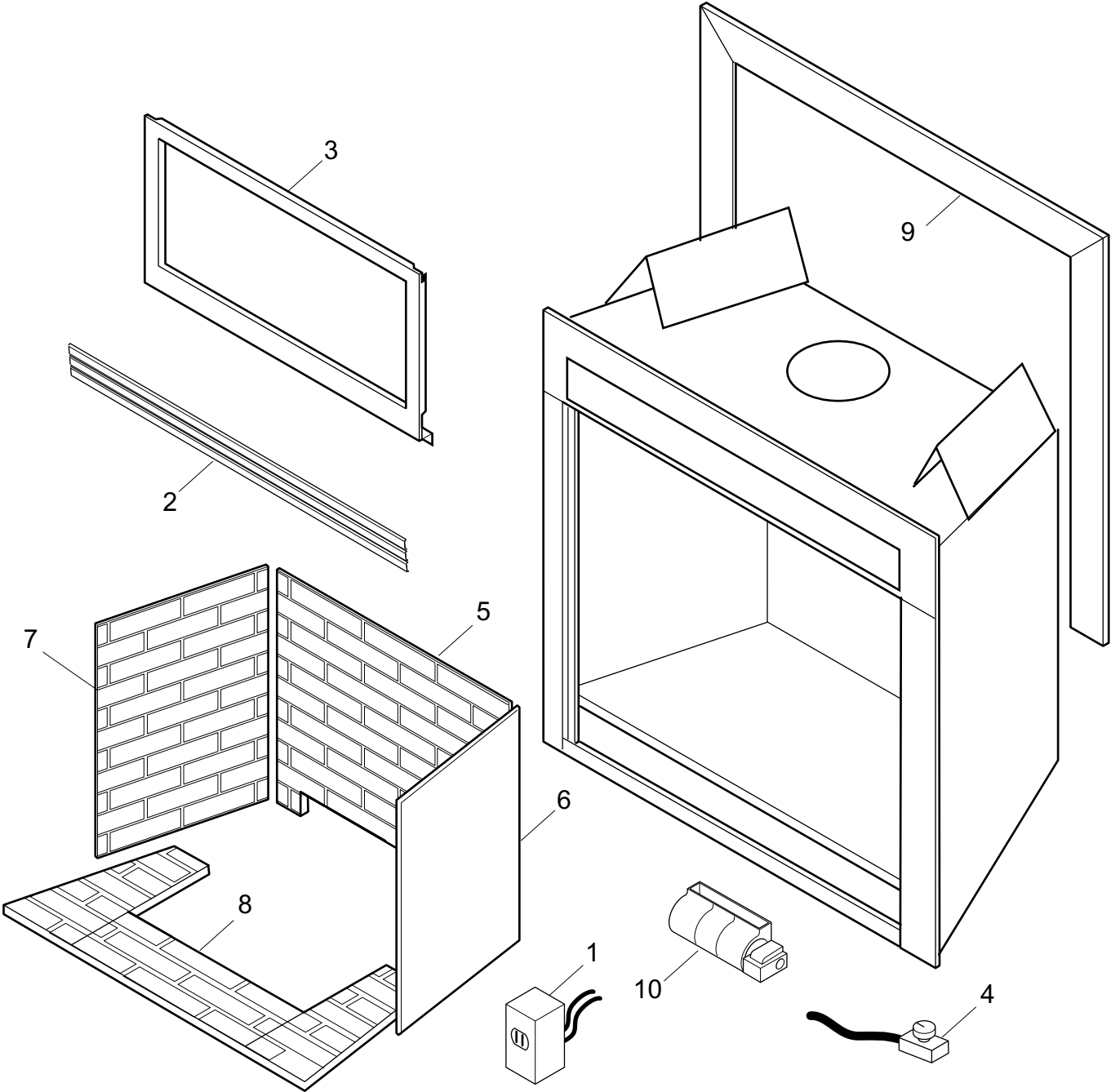
READ BEFORE INSTALLING. SAVE THESE INSTRUCTIONS

VENT COMPONENTS


Item	Qty/Box	Description	Simpson Duravent or Monessen P/N
1	1	Simpson Horizontal High Wind Termination Cap	985
1	1	Horizontal Square Termination Cap with Built-In Vinyl Siding Standoff, Heat Deflector and Firestop	BHRTK
1	1	Horizontal Rigid Pipe Termination Kit with Horizontal Termination Cap with Built-In Vinyl Siding Standoff, Heat Deflector, Firestop, 90° Elbow and 11"x14 ⁵ / ₈ " Adjustable Pipe	BHSTK
1	1	Horizontal Flexible Pipe Termination Kit with Horizontal Termination Cap with Built-In Vinyl Siding Standoff, Heat Deflector, Firestop, 20" to 40" Flexible Pipe Adapter	BHSFTK
2	1	Vertical Termination	980
3	6	6" Pipe Length	908
3	6	9" Pipe Length	907
3	6	12" Pipe Length	906
3	6	24" Pipe Length	904
3	6	36" Pipe Length	903
3	6	48" Pipe Length	902
4	6	11" To 14 5/8" Pipe, Adjustable	911
4	6	17" To 24" Pipe, Adjustable	917
5	6	45° Elbow	945
5	6	45° Swivel Elbow	945G
6	6	90° Elbow	990
6	6	90° Swivel Elbow	990G
7	6	Flashing, 0/12 To 6/12 Roof Pitch	943
8	6	Storm Collar	953
9	6	Firestop	963
10	1	Vinyl Siding Standoff	950
11	1	Deflector Shield	37D0115 (Monessen)

ILLUSTRATED PARTS LISTS

FIREBOX COMPONENTS

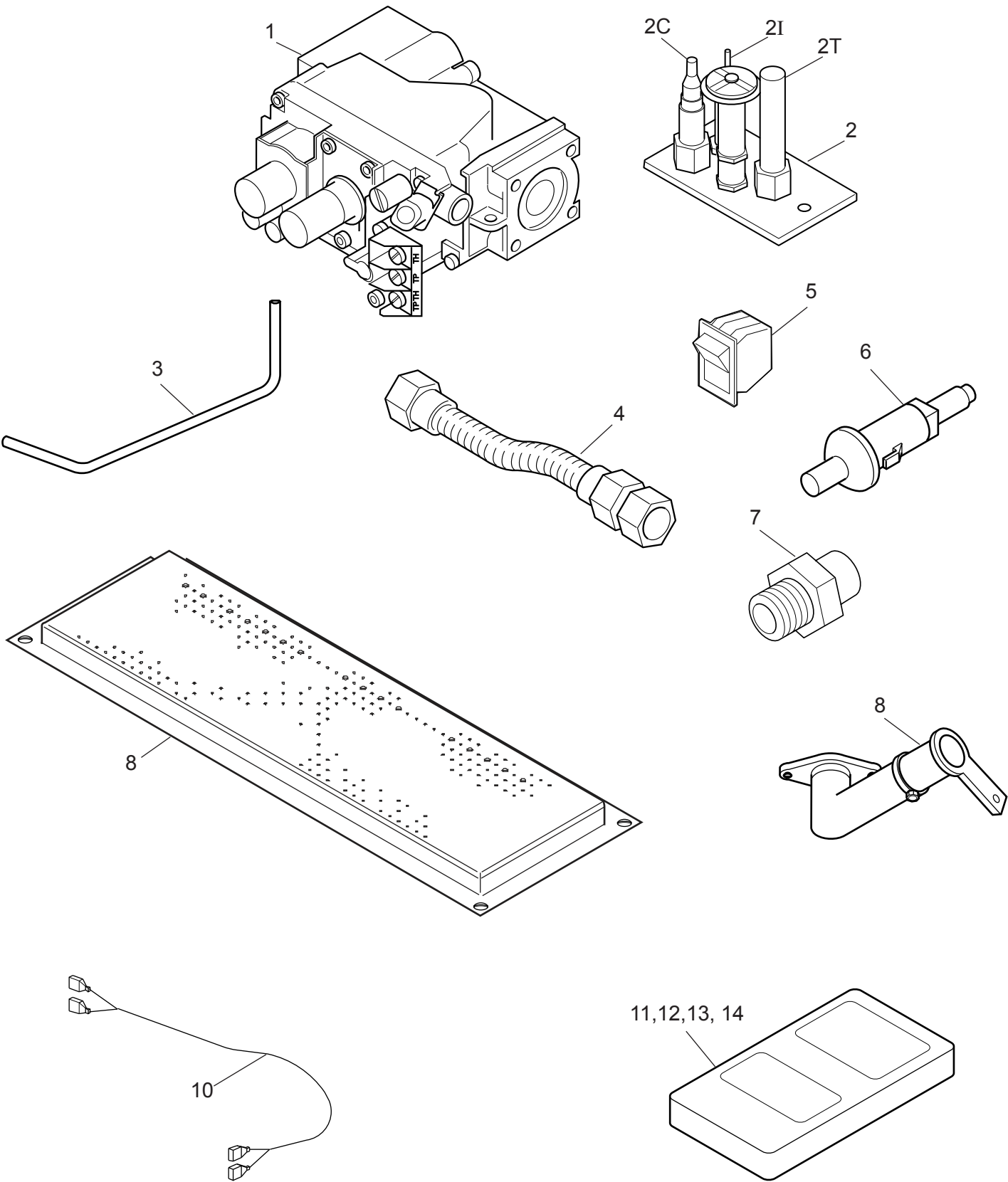


FIREBOX COMPONENTS

Item	Description	Qty	BDV300	BDV400	BDV500	BDV600
Standard Features						
1	Junction Box Assembly	1	26D2128K	26D2128K	26D2128K	26D2128K
2	Black Louver	6	54D0246	26D0695	26D0697	26D0699
3	Glass Frame Assembly	1	54D0294	54D0195	54D0340	54D0443
Factory Installed Options						
2	Brass Louver	6	54D0249K	26D0701K	26D0703K	26D0705K
4	Thermostat Sensor	1	26D2870	26D2870	26D2870	26D2870
5	Standard Firebrick Center	1	54D0244	37D1070	37D1071	54D0440
6	Standard Firebrick Right	1	54D0245	54D0103	54D0103	54D0103
7	Standard Firebrick Left	1	54D0245	54D0102	54D0102	54D0102
8	Blower Motor	1	54D0281	26D0748	26D0748	26D0748
Accessories/Field Installed Options						
2	Brass Louver	1	L30BR	L32BR	L36BR	L42BR
2	Chrome Louver	1	L30CH	L32CH	L36CH	L42CH
2	Filigree	1	BRFK30	BRFK32	BRFK36	BRFK42
5,6,7	Weathered Firebrick Walls	1	FB300W10B	FB400W10B	FB500W10B	FB600W10B
8	Weathered Firebrick Floors	1	FB300W10FB	FB400W10FB	FB500W10FB	FB600W10FB
9	Curved Design - Brass	1	BRTK30C	BRTK32C	BRTK36C	BRTK42C
9	Curved Design – Chrome	1	CHTK30C	CHTK32C	CHTK36C	CHTK42C
9	4" Wide Brass Wall Trim	1	BRWT30	BRWT32	BRWT36	BRWT42
10	T-stat Blower with Speed Control	1	BLOT300	BLOT400	BLOT400	BLOT400

ILLUSTRATED PARTS LISTS

STANDING PILOT — MILLIVOLT CONTROL



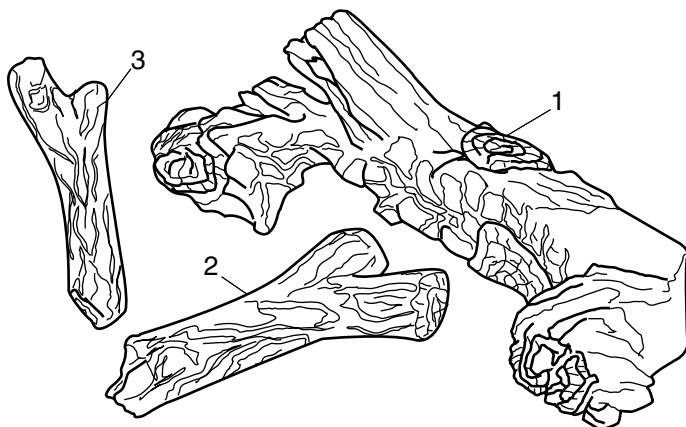
STANDING PILOT – MILLIVOLT CONTROL

Item	Description	Qty	BDV300NV	BDV300PV	BDV400NV	BDV400PV	BDV500NV	BDV500PV	BDV600NV	BDV600PV
1	Gas Valve Assembly	1	37D0117	37D0118	37D0117	37D0118	37D0117	37D0118	37D0117	37D0118
2	Pilot Assembly	1	37D0018	37D0019	37D0018	37D0019	37D0018	37D0019	37D0018	37D0019
2C	Replacement Thermocouple	1	37D1067	37D1067	37D1067	37D1067	37D1067	37D1067	37D1067	37D1067
2I	Replacement Igniter and Wire	1	37D1069	37D1069	37D1069	37D1069	37D1069	37D1069	37D1069	37D1069
2T	Replacement Thermopile	1	37D1068	37D1068	37D1068	37D1068	37D1068	37D1068	37D1068	37D1068
3	Burner Tube	1	54D0288	54D0288	54D0194	54D0194	54D0194	54D0194	54D0194	54D0194
4	Flexhose with Shutoff Valve	1	23D6046	23D6046	23D6046	23D6046	23D6046	23D6046	23D6046	23D6046
5	Rocker Switch	1	41D0048	41D0048	41D0048	41D0048	41D0048	41D0048	41D0048	41D0048
6	Piezo Igniter	1	14D0503	14D0503	14D0503	14D0503	14D0503	14D0503	14D0503	14D0503
7	Injector	1	48D0154	48D0156	54D0140	54D0141	54D0142	54D0143	54D0142	54D0143
8	Burner Assembly	1	54D0200	54D0200	54D0001	54D0001	54D0329	54D0329	54D0329	54D0329
9	Venturi	1	45D0059	45D0059	45D0059	45D0059	45D0059	45D0059	45D0059	45D0059
10	Wire Assembly	1	44D0500	44D0500	44D0500	44D0500	44D0500	44D0500	44D0500	44D0500
10	Wire Assembly	1	44D0501	44D0501	44D0501	44D0501	44D0501	44D0501	44D0501	44D0501
Accessories										
11	Thermostatic Remote Control	1	RCT/TRC	RCT/TRC	RCT/TRC	RCT/TRC	RCT/TRC	RCT/TRC	RCT/TRC	RCT/TRC
12	Remote Control On/Off	1	RCM/MRC	RCM/MRC	RCM/MRC	RCM/MRC	RCM/MRC	RCM/MRC	RCM/MRC	RCM/MRC
13	Wall Switch Kit	1	MVWS	MVWS	MVWS	MVWS	MVWS	MVWS	MVWS	MVWS
14	Wall Thermostat Kit	1	MVWTS	MVWTS	MVWTS	MVWTS	MVWTS	MVWTS	MVWTS	MVWTS
Conversion Kit (Not Shown)										
	300 Conversion NG to LPG	1	BCK300CKP	—	—	—	—	—	—	—
	300 Conversion LPG to NG	1	—	BCK300CKN	—	—	—	—	—	—
	400 Conversion NG to LPG	1	—	—	BCK400CKP	—	—	—	—	—
	400 Conversion LPG to NG	1	—	—	—	BCK400CKN	—	—	—	—
	500 Conversion NG to LPG	1	—	—	—	—	BCK500CKP	—	—	—
	500 Conversion LPG to NG	1	—	—	—	—	—	BCK500CKN	—	—
	600 Conversion NG to LP	1	—	—	—	—	—	—	BCK500CKP	—
	600 Conversion LP to NG	1	—	—	—	—	—	—	—	BCK500CKN

ILLUSTRATED PARTS LISTS

LOGS

Item	Description	Qty	BDV300	BDV400	BDV500	BDV600
1	Rear Log	1	54D0121	54D0181	54D0339	54D0039
2	Right Log	1	54D0147	54D0116	54D0361	54D0361
3	Left Log	1	54D0146	54D0115	54D0360	54D0360



TROUBLESHOOTING

STANDING PILOT IGNITION

SYMPTOM	POSSIBLE CAUSE	ACTION
1. Spark ignitor will not light pilot after repeated triggering of piezo.	<p>A. Wire disconnected.</p> <p>B. Defective ignitor.</p> <p>C. No gas or low gas pressure.</p> <p>D. No Propane/LPG in tank</p>	<p>A. Open door and check to make sure wire is connected to ignitor.</p> <p>B. Check for spark at electrode and pilot. If no spark and electrode wire is properly connected, replace pilot assembly.</p> <p>C. Check remote/manual shut off valve from fireplace. Low pressure can be caused by bent lines, restricted lines, low pressure line pressure. Consult with plumber or gas supplier.</p> <p>D. Check Propane/LPG tank. Refill tank.</p>
2. Pilot will not stay lit after carefully following lighting instructions.	<p>A. Defective thermocouple</p> <p>B. Defective valve</p>	<p>A. Check that thermocouple flame impinges on thermocouple. Clean and/or adjust pilot for maximum flame impingement. Ensure that the thermocouple connection at the gas valve is fully inserted and tight. Disconnect the thermocouple from the valve, place one millivolt lead wire on the tip of the thermocouple and the other meter lead wire on the thermocouple copper lead. Start the pilot and hold the valve knob in. If the millivolt reading is less than 15 mV, replace pilot assembly.</p> <p>B. If thermocouple is producing more than 15 mV, replace faulty valve.</p>